

#18-NA-144: Multiple Electrical Concerns, Intermittent Multiple Instrument Panel Cluster (IPC) Warning Lamps Illuminated, Intermittent Multiple Message on Drivers Information Center (DIC), Malfunction Indicator Lamp (MIL) Illuminated - (Mar 28, 2019)

Subject: Multiple Electrical Concerns, Intermittent Multiple Instrument Panel Cluster (IPC) Warning Lamps Illuminated, Intermittent Multiple Message on Drivers Information Center (DIC), Malfunction Indicator Lamp (MIL) Illuminated



Brand:	Model:	Model Year:		VIN:		Engine:	Transmission:
		from	to	from	to		
Chevrolet	Silverado	2017	2018			All	All
	Silverado LD	2019	2019				
GMC	Sierra	2017	2018				
	Sierra Limited	2019	2019				

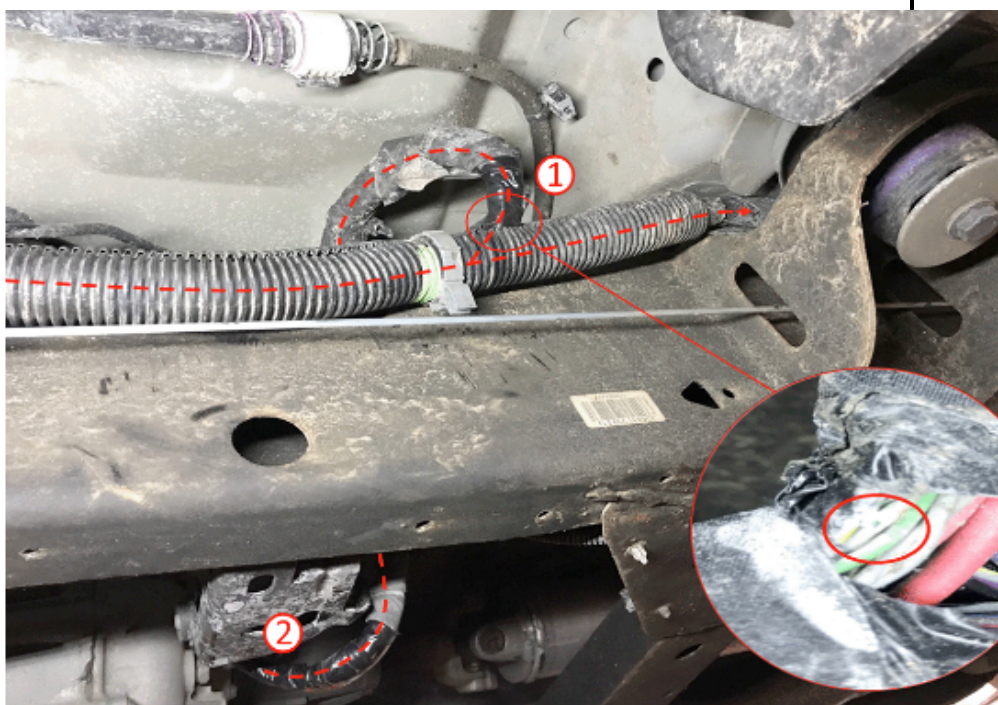
Involved Region or Country	North America, Middle East, Israel, Chile and Thailand
	<p>Some customers may comment on, but not limited to, one or more of the following conditions:</p> <p>Note: Not all the effects or driver notifications listed have been experienced. However, the different effects and driver notifications may be caused by the module and wiring harness at the module. Components on different lines in the list below are in different circuits. Due to the cause of the condition, and the positions of the wires in the harness, it is unlikely that</p> <p>© 2021 General Motors. All rights reserved.</p> <ul style="list-style-type: none"> IPC Warning Lamps Illuminated: ABS, Stabilitrac, brake warning, traction control, rear bulb outage, turn signals flashing fast, Steering Assist is Reduced Drive with Care, service power steering, Malfunction Indicator Lamp (MIL) Intermittent and/or Inoperative Multiple Electrical Concerns: Left and/or Right side tail and/or signal light inoperative, rear camera, high speed GMLAN communication, chassis bus communication <p>Note: This is a multi-wire bundled harness and, depending on which wire is damaged, can set a variety of DTCs.</p> <p>Some technicians may find one or more of the following DTC set:</p> <ul style="list-style-type: none"> C0035 C0040 C0045 C0050 C0710

Condition

- C1115
- C1116
- C1117
- C1118
- P0449
- P0453
- P0499
- P129D
- P2537
- P2537
- U007D
- U0073
- U0074
- U0077
- U0100
- U0101
- U0121
- U0126
- U0137
- U0140
- U0151
- U0415
- U0428
- U1556
- U18A2

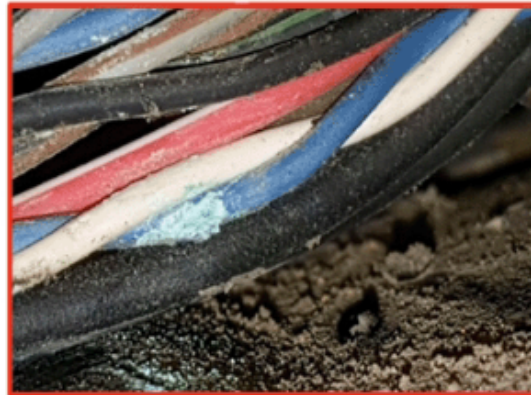
This condition may be caused by high resistance, opens, shorts and/or damage circuits in the chassis and electronic brake controller wiring harness.

⇒ Shown below are some areas to pay particular attention to:





- Body (1)
- Rear Crossmember (2)



Cause

- Frame/Leaf Spring Support Bracket



- Box/Bed Mount

Correction

Perform inspection of the wiring harness for any damage, opens, shorts, corrosion and contact with the chassis.

1. With a suitable light, inspect the wiring harness point of contact.
⇒ Refer to Wire to Wire Repair in SI (Document ID: 2161159).
2. Using Woven Polyester Electrical Tape (PET), tape all the contact points of the harness ensuring that the tape is applied in a double layer.

3. If required, reposition the harness away from area of contact.

Parts Information

No parts are required for this repair.

Warranty Information

For vehicles repaired under warranty, use:

Labor Operation	Description	Labor Time
5430902	Wire to Wire Repair	Use the Published Labor Operations Time

Version	2
Modified	Released May 01, 2018 Revised March 28, 2019 – Added 2019 Model Year and DTC P0499 to Condition.

GM bulletins are intended for use by professional technicians, NOT a "do-it-yourselfer". They are written to inform these technicians of conditions that may occur on some vehicles, or to provide information that could assist in the proper service of a vehicle. Properly trained technicians have the equipment, tools, safety instructions, and know-how to do a job properly and safely. If a condition is described, DO NOT assume that the bulletin applies to your vehicle, or that your vehicle will have that condition. See your GM dealer for information on whether your vehicle may benefit from the information.



WE SUPPORT
VOLUNTARY
TECHNICIAN
CERTIFICATION